

# The i's of Texas

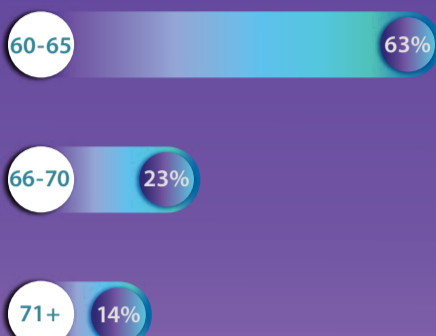
Infographics and Interactives from the Texas Legislative Council

## TEXAS MATURE LABOR FORCE Ages 60+

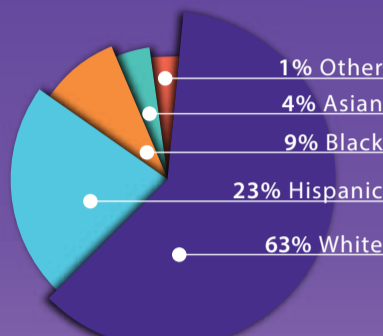
### By Occupation



### Age Distribution



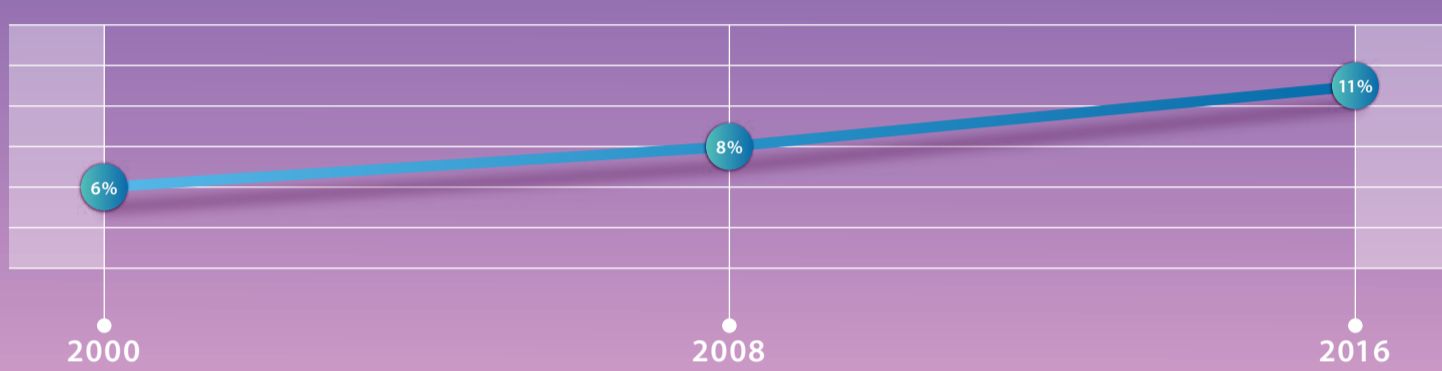
### Race & Ethnicity



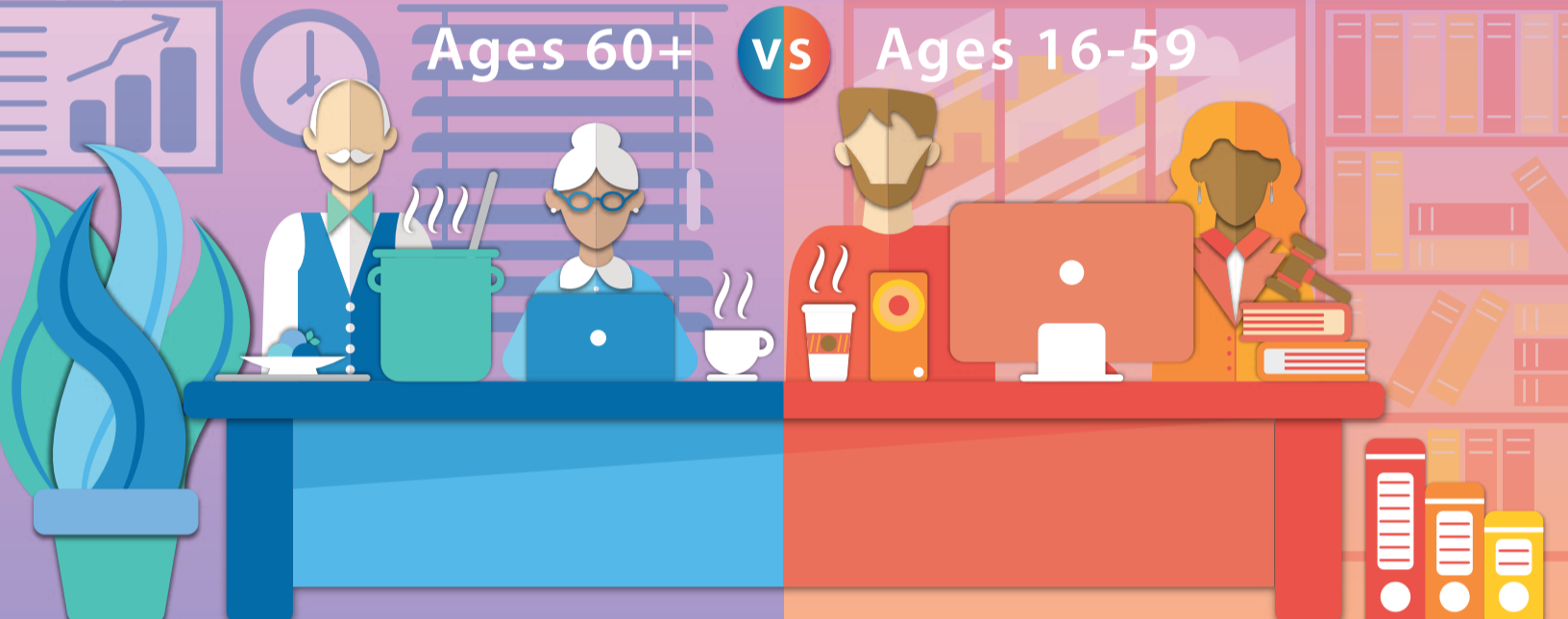
### Sex



### Percentage of Labor Force



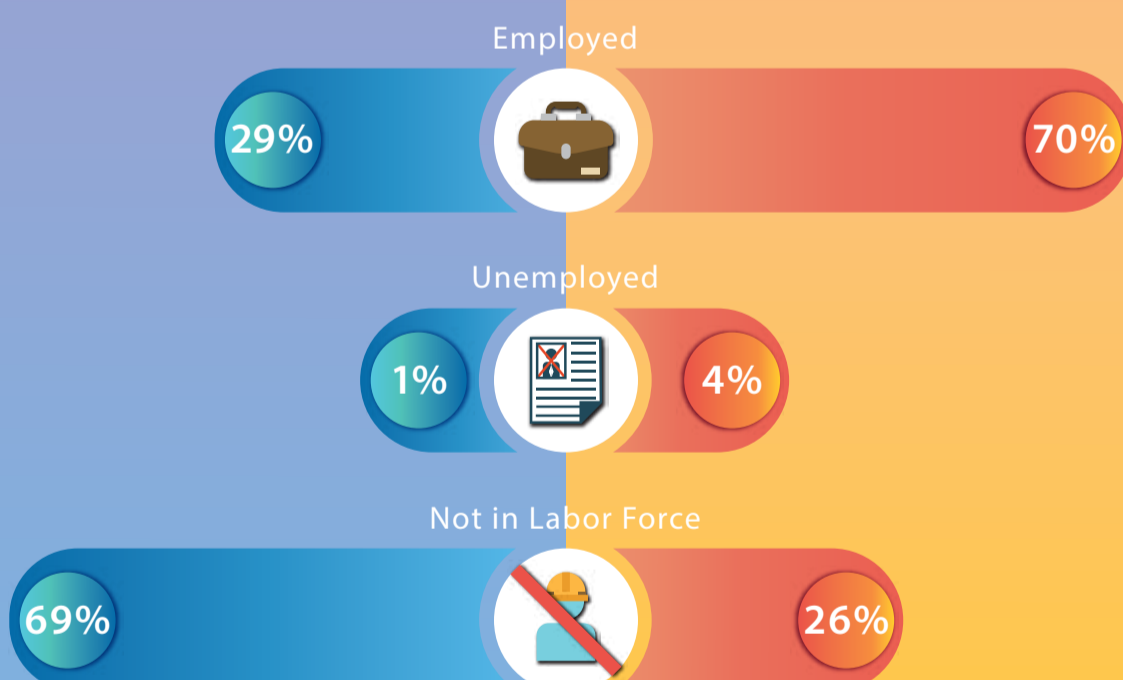
### Ages 60+ vs Ages 16-59



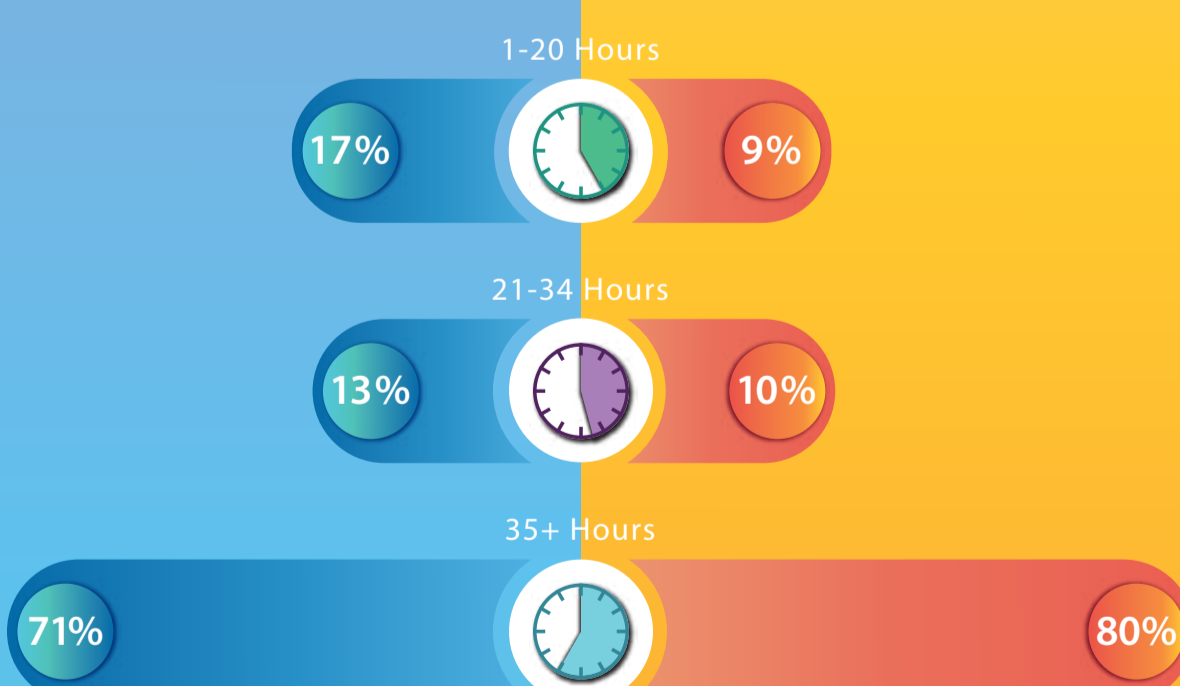
### Median Earnings



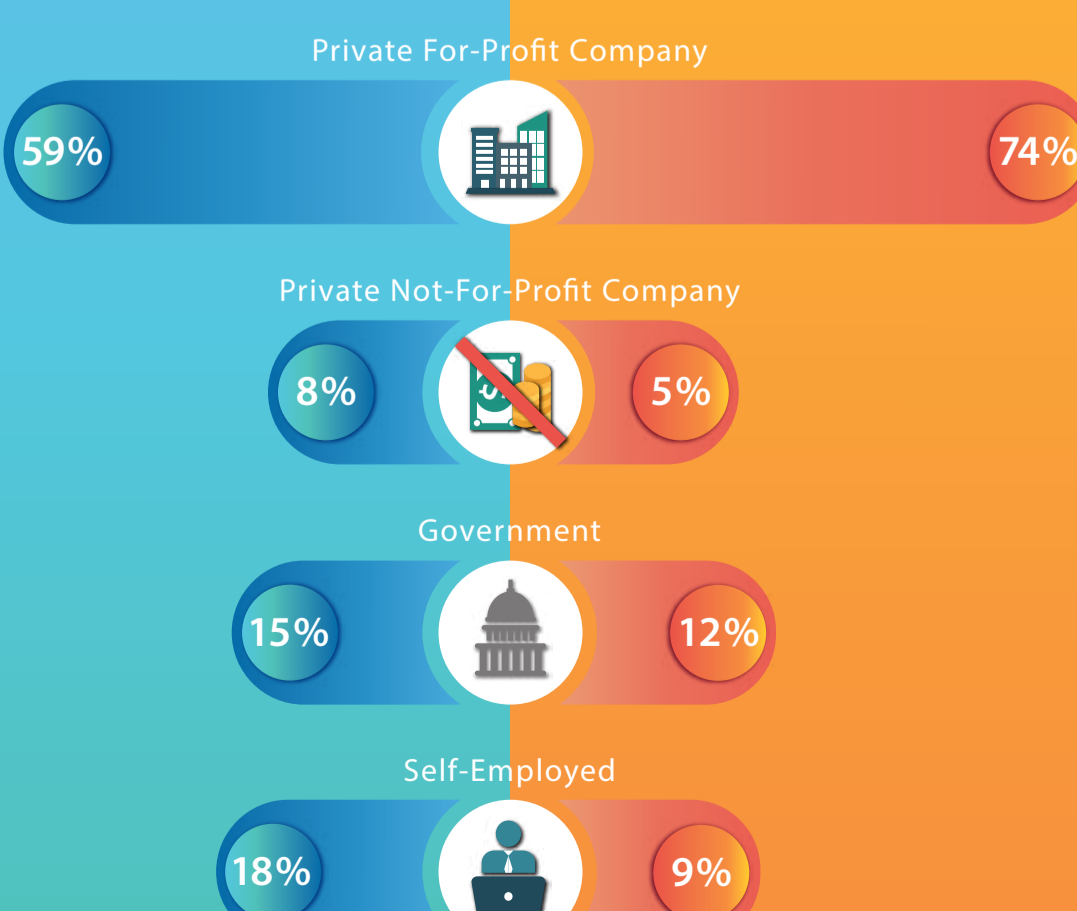
### Employment Status



### Hours Worked



### Class of Worker



Source: U.S. Census Bureau 2000, 2008, and 2016 Public Use Microdata Sample (PUMS).  
Notes: Mature labor force participants include civilians 60 and over who have a job or who are unemployed.  
Median earnings for employed civilians 16 and over working 35 or more hours a week are adjusted for 2016 dollars.  
Contact Us: TLC Research Statistics & Demographics Section (512) 463-1143